

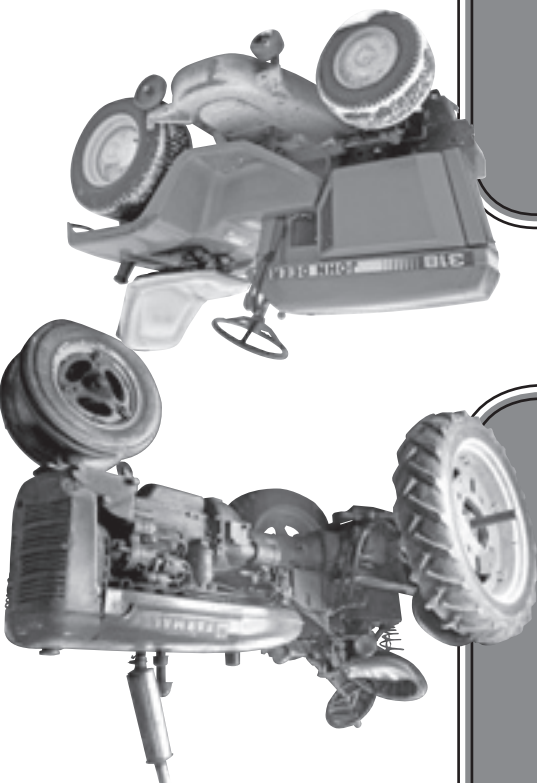
- Set of air horns & girl
- Cement Dutch boy
- Coleman camp stove
- Basinet
- (4) Leg hold traps
- Muskat pelt stretchers
- Coleman lantern
- Coffee maker
- Dehumidifier
- Canning jars
- Pots & pans
- Box camera
- Wall shelf
- Large table lamps
- Table radios
- Portable TV
- Projector screen
- Slide projector
- Cam-corder

- High chair
- Youth rocker
- Rocker recliners
- China cupboard
- chairs
- Upholstered arm
- Card table
- 4 chairs
- with 2 leaves &
- Formica top table
- leaves
- with pull out
- Porcelain top table
- Wall clocks
- Glass curio cabinet
- with mirror back
- Christmas decorations
- "Old Man Winter"
- arm chair
- Ladies rocker
- Ladder back chairs
- Twig art lamp table
- Love seat
- Maytag automatic washer
- Maytag elect. dryer



CONTEMPORARY & ANTIQUE FURNITURE:

TRUCK & GO CART:
 1995 Dodge Laramie SLT Ram 1500 short box pick-up, regular cab, 4X4, 318 V8, automatic, AC, power windows, cassette player, 16" tires, 193K miles, VIN # 1B7HF16V0SS316655
 Pepsi-Cola go cart with gas engine, used in parades



TO SETTLE THE ESTATE OF THE LATE ARTHUR & SAVANNAH POTTER
Saturday, April 20th 2013 @ 10:00AM
Byron Center, MI (Kent Co.)

PUBLIC ESTATE AUCTION
LIVE ON-SITE!
"The Sound That Sells"
Art Smith AUCTIONEERS

LIVE ON-SITE!
PUBLIC ESTATE AUCTION

Sat. Morning, April 20th, 2013 • Starting at 10:00AM



TO HELP SETTLE THE ESTATE OF THE LATE ARTHUR & SAVANNAH POTTER A PUBLIC AUCTION WILL BE HELD.

NOTE: Arthur & Savannah lived nearly 90 years in this area. Mr. Potter worked over 30 years at Jarvis and he & Mrs. Potter loved to work in the garden and green house. The family invites you to attend this Auction and thank you in advance for your time and consideration. The parking lot at Woodhaven Reformed Church, just north of the house will be available for parking. For your convenience we will have port-a-jons, wash-up station and lunch wagon.

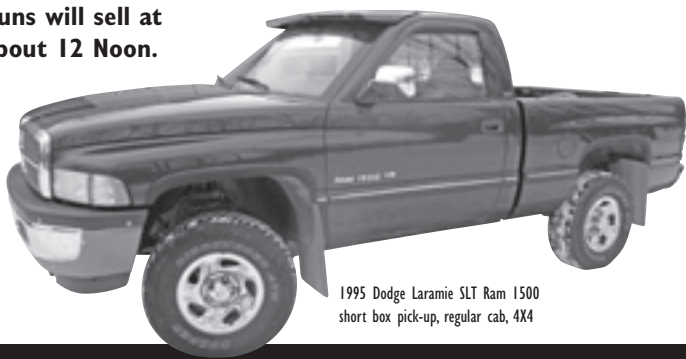
LOCATION: At the house
 6869 Wilson Ave., Byron Center, MI 49315

DIRECTIONS: South of Grand Rapids or north of Kalamazoo take US-131 to the M-6 west exit # 77, west 4 miles to Wilson exit # 3, south 1/2 mile. OR from Holland take I-196 East to the M-6 exit # 64 then east on M-6 3 miles to Wilson Ave. exit # 3 & south 1/2 mile. (Kent Co.)

TERMS: Cash or good check day of auction. Master Card or VISA with 3% service fee. We subscribe to Check Alert INC. (A check collection company)

Some items from family and neighbors, all must be sold! Make plans to be on Wilson Ave. just south of M-6 on Sat. April 20 at 10:00 AM for the start of this two ring Auction.

Guns will sell at about 12 Noon.



1995 Dodge Laramie SLT Ram 1500 short box pick-up, regular cab, 4X4

Visit www.artsmithauctions.com for 100's of photos of this auction!



Art Smith
 (616) 696-2598
 E-mail: artsmith@triton.net

Noah Smith
 (616) 633-4254
 E-mail: noahsmith@hughes.net

Professionals in the Live Auction Method of Marketing

ANTIQUES, COLLECTIBLES & FARM PRIMITIVES:

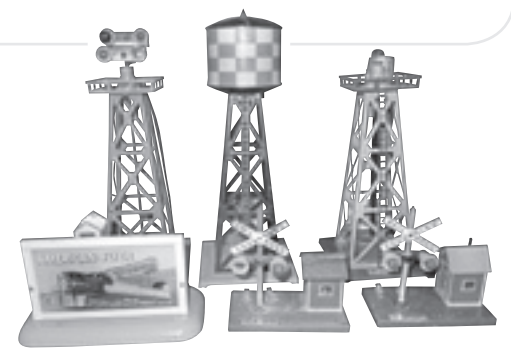
Large apple cider press with chopper	Approx. 50 model cars including Franklin Mint, many in boxes	Finger lamp	Approx. 12 train set buildings and other accessories
Large cast iron hog kettle (11) two man cross cut saws	Toy cream separator	Doll carriage	Michigan license plates
Buck saws	Toy pump jack	Hand meat grinder	Carpenters tool chest
McClellan saddle	Toy John Deere visible gas pump	Cl toy steam ship	Youth snow sleds
Stone axe head	(12) Danbury Mint collector plates	Apple peeler Pat. Date 1880	Youth Schwinn & Western Flyer bikes
Approx. 35 kerosene barn and construction lanterns, some red globe	(2) Bulova mantle clocks	Elect. butter churn	4 egg baskets
Rug beater	Cameras and lens	Bottle capper	Howard table radio
Several cow bells	Glass candy container	Bean slicer	Feed scoop
Jewelry	Cl pots and pans	Hand crank butter churn	Hanging scales
Stemware	LP records	Pitcher pump	Baby carriage
Silverware	Books	Large insulators	Hay harpoons
Sewing box	Die cast cars	Wood alphabet blocks	Platform scales
Cups & saucers	Dolls	Collectible glass	Handmade crates
China	Toy covered wagon with horse	Candle stick holders	Planet Jr. garden seeder
Childs tea set	Toy cable car	Picnic basket	Wood spoke auto wheel
Collection of Country Store figurines	Marbles	Wood baskets	Kerosene stove
Eisenhower collector plate	Framed pictures and prints	10 gal. crock	Auto trunk lid "Automatic-Stickshift"
	Bedroom lamps	4 gal. crock	Neck yokes
	Table lamps	2 gal. crock	Walking plow
	Oil lamps	5 gal. crock butter churn	Hub caps
		Hard cover books	Sears Roebuck floor mod. Corn sheller with elect. motor
		Gilbert "American Flyer" train with # 343 engine	Hand seeder
		Train cars	Several milk cans

JD 520 tractor photo	Many hand crafted beer can air planes	Auto jack	Wood pulleys
Sand box toys	Clamp on hand corn sheller	Wood pulleys	Hand seeder
Michigan license plates	Meat saw	Scythes	Primitive toaster
Carpenters tool chest	Cow stanchions	Two man ice tong	Block & tackle
Youth snow sleds	Apple peeler	Hay trollies	Brass scales
Youth Schwinn & Western Flyer bikes	Lanyard scales	Brass scales	Kraut cutter
4 egg baskets	Cant hook	Hoof trimmer	Cl match dispensers
Howard table radio	Youth wagon	Beam drill	RR mauls
Feed scoop	Cottage cheese can	Unusual 2 tine "bundle" fork	Wright gas operated saw
Hanging scales	Several ice tongs	Wagner Cl pans	Stump puller, log chain
Baby carriage	Tonka trucks	RR car mover	Fence stretchers
Hay harpoons	Oil can	Meat cleaver	(3) Unusual leather saddle double flag holders
Platform scales	Dasher washer	JD wrenches	Hog scrapers
Handmade crates	Land measure wheel		
Planet Jr. garden seeder	(2) Black Hawk seed box covers		
Wood spoke auto wheel	Hay knife		
Kerosene stove	Fly sprayers		
Auto trunk lid "Automatic-Stickshift"	Cattle watering cup		
Neck yokes	Hand potato planter		
Walking plow	"Soap Saver" washer board		
Hub caps	Mad ox		
Sears Roebuck floor mod. Corn sheller with elect. motor	Wood handled shovels		
Hand seeder	Wood bucket		
Several milk cans	Horse collar with hames		
	Hand corn planter		

Brass torch	Hesston 50th Anniversary belt buckle
Approx. 15 National Finals Rodeo belt buckles 1980-1990's	Several commemorative belt buckles
"Grown in America" farm belt buckles	Nickel Sliver belt buckles
Bolo ties, one with buffalo nickel	(4) Cans of Harley Davidson "Heavy Beer" cans dated 1992
Log tongs	Shoe hasp
(22) Budweiser commemorative beer steins 1980-2002	Other steins
Kerosene cans	Buggy lamp with red lens
Wood handle pipe wrench	Bee smoker
Wash tubs	Check corn planter post
Pump organ top	Etc. etc.

GUNS AND GUN RELATED: Selling at Approx. 12Noon

Winchester Mod. 97, 12ga. Pump, w/hammer, made in 1928, #784393	Olympic Arms single shot 12ga. (Repaired)
Winchester Mod. 12, 12ga. Pump, w/out hammer, made in 1940's #824915	H&R Shikari Mod. 155, 45-70 Gov. single shot rifle #AH251172 (with brass cleaning rod)
Winchester Mod. 12, 16ga. Pump, w/out hammer, #585165	American "Side Snap" 12ga. Single shot 20ga. Muzzle loader shotgun
American Gun Co. 12ga. Dog-eared double barrel, two triggers, #874787	50cal. Muzzle loader
Remington Mod. 12, .22, pump, w/out hammer, octagon barrel, 1930's, #781949	35cal. muzzle loader smooth bore
H&H Md. 550 "Pal" .22, single shot bolt #4433	Smooth bore muzzle loader
Ruger Mod. Mark II, .22, 50th Anniversary Special 1949-1999, 8 shot pistol,	20ga. Muzzle loader
4 ¼ barrel, 2 clips, new in box, never fired	12ga. Muzzle loader
Lorain Mod. L380, 380cal. Autoload pistol, clip, 2 ½" bbl. #381516	TC "New Englander" 50cal. Muzzle loader
Smith & Wesson .38, 5 shot revolver, 3" bbl. Pat. 1877 #42866	12ga. Under-hammer muzzle loader
Wesko starter gun	TC "New Englander" 54cal. Muzzle loader
H&H .38, Mod. Double Action, 5 shot revolver, 1 ½" bbl. #NA	Daisy Mod. 1000 BB gun lever action
S. Marco 44 cal. Black powder revolver, 7" bbl. #3422	Ben Franklin Mod. 310 pump pellet gun
F. Llipietta 44 cal. 6 shot Black powder revolver, 6 ½" bbl. #R257352	Daisy Mod. "Eagle" plastic stock BB gun lever action
Replica Arms 45 cal. Single shot, dog eared muzzle loader hand gun	Break Action pellet gun with collapsible stock
Kit made 45 cal. Single shot, dog eared muzzle loader hand gun	IMC Pioneer break action pellet gun
Corsair-Jager double bbl. Muzzle loader hand gun	Pump action pellet gun
Kit made 45 cal. Flint lock, dog eared muzzle loader hand gun	Power Line 1200 bb gun, CO2 pistol
A.S.M. 44 cal. Single shot muzzle loader hand gun with extra smooth bore bbl.	Daisy Mod. 95 bb gun
36 cal. Single shot muzzle loader hand gun	Daisy Mod. 99 bb gun
R. Kern "Key" 36 cal. Match lock single shot hand gun	Daisy Mod. 1894 bb gun
Glenfield Marlin Mod. 30-A, 30-30win, lever action with scope #21198061	Pump shot gun (for parts only)
US Springfield Armory Mod. 1898, 30-40 Krag carbine, bolt action #237479	Cobra Golden Eagle compound bow with arrows and accessories
Rem. Mod. 550-1, .22cal. autoloader, tube feed	Barnett Quad-300 cross bow with scope, crank up cock
308 Mauser, bolt action single shot with scope #3145R	2 pc. Leather gun case
Japanese .38 cal. Bolt action military rifle	Bowie-Axe knife with sheath
Northwestern .22 cal. Bolt action single shot	.22 ammo
Belgium Laminated steel bbl. Dog eared shot gun	308 ammo
Ranger 16ga. Double bbl. Hammerless, Pat. 1915, #X12222	16ga. Slugs
Rem. "The Sportsman" 16ga. Autoload, "Browning Pat.) #214186	16ga. Shot shells
	7.62MM Metak
	7.62X39 ammo
	45-70 Gov. ammo
	30-40 Krag ammo
	30-30 ammo
	Simmons spotting scope
	Remington "Shur-Shot" wood ammo box
	More, lots more!!!



TRACTOR, FARM, SHOP AND LAWN TOOLS:

1949 Farmall Mod. C tractor, NF, rear belt pulley, power lift, fenders, 11.2X36" tires # 43013	John Deere Mod. 318 garden tractor with power steering, 50" deck, power lift (front & rear), Onan engine, 45" front snow blower, tire chains, 1550 hours, # M00318X019199 (one owner)	Craftsman deep socket set	Crescent wrenches	Pedestal grinder	Cordless drills
IHC plow	Reel mower with gas engine	Craftsman tool sets	Gas cans	C-clamps	Mole traps
Pull disc	Cultivator fenders	Craftsman ½" socket set	Tin snips	Gear puller	Olsen hatchet
Snow plow	Battery charger	Craftsman 9 drawer roll-about tool chest with 3 drawer top tool box	Hyd. jacks	Scrap motors and elect. wire	Estwing hatchet
3pt. Ber-Vac 7' two stage snow blower	Shop built horz. Band saw	Craftsman floor mod. Drill press	Tap & die set	Delta scroll saw on stand	Stanley hatchet
1979 Madill, OK, 25' Gooseneck, tandem axle livestock trailer, newer 15" tires	Sandborn air compressor 220V	Craftsman hand wood plane	Drill bits	Bar clamps	Drum pump
Bellsaw Mod. 65X portable saw mill, flat belt drive, 29" dia. saw blade, 12' OAL,	Craftsman 10" radial arm saw, 3 PM heavy duty	Craftsman table saw	Screw driver sets	Drill indexes	Metal roof crimpers
		Craftsman 6" belt sander & disc sander	Brace & bit	Skill saws	Girls 3 sp. Bike
		Craftsman lawn trailer	Log chains	Elect. drills	½ Bu. Baskets
		10HP 3 phase elect. motor	Levels	Tool boxes	Reese hitch bike rack
		Maggi industrial table saw power feeder, 230V	Organizers full of screws etc.	Tool boxes	Chain binders
		Pipe wrenches	Crow bars	Elect. sander	Push type lawn fertilizer spreader
			Hammers	Grease tubes	Chain fall
			Squares	Nail puller	Flat drive belt
			Hand saws	Jumper cables	Many tomato boxes & other produce containers
			Saw blades	Shop vac	Aluminum extension ladder
			Drill bit sharpener	Push mower	Rakes, hoes, shovels, axes, etc. etc.
			Soldering gun	Pipe cutter & threader	
			Paint sprayer	Jonsered chainsaw	
			Bolt cutter	Elect. hedge trimmer	
				Pipe vise	

Visit www.artsmithauctions.com for 100's of photos of this auction!