

LIVE ON-SITE! LIVE ON-SITE! LIVE ON-SITE!

Public Estate Auction

The Sherwood & Muriel Casterline Estate

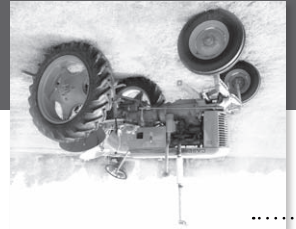
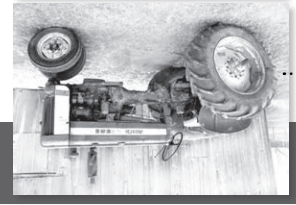


16616 Peach Ridge Ave.
Kent City, MI 49330



May 18th 2013
@ 10:00AM
Sand Lake, MI 49343

Live Auction Calendar



Monday, May 20th @ 4:00PM Coopersville, MI
Live On-site Public Auction w/ 1958 John Deere 420 w/factory 3pt, Allis Chalmers B, Line of 3pt Equipment, Shop Tools, Guns, Furniture & Household Items

Thursday, May 23rd @ 2:00PM Cedar Springs, MI
Live On-site Public Auction w/ Kubota B2150 HSD 4x4 diesel w/ LA350 loader 242hrs (1 owner), Newer 3pt. Equipment, Shop Tools, IHC Cub Cadet Garden Tractor, Allis Chalmers VAC w/3pt, Cast Iron Toy Collection, Collectibles, Household Items & Furniture. Owners have bought a home in Florida and will be moving.

Thursday, May 30th @ 2:00PM Spring Lake, MI
Live On-site Public Estate Auction w/ 2010 Ford Lariat 4x4 Super Cab (22,800 1-owner miles), John Deere LT 150 lawn tractor, Guns, Shop Tools, Lawn Equipment, Regina table top disc music box, Primitives, Collectibles, House full of Furniture & Much More! Held to Settle the Estate of the Late Marvin Bottema.

Saturday, June 15th @ 9:00AM Coopersville, MI
Live On-site Public Auction w/ 1-Owner Collection including 60 Collector Tractors, Antique Farm Equipment, Tractor Parts, Antiques, Shop Tools & Much More.

Visit www.artsmithauctions.com for color photos of this Auction.



LIVE ON-SITE! LIVE ON-SITE! LIVE ON-SITE!

Public Estate Auction

The Sherwood & Muriel Casterline Estate

Saturday May 18th, 2013 starting at 10:00AM

Location:

On site at 17989 Algoma Ave. Sand Lake, MI 49343

Directions:

North of Grand Rapids 20 miles or south of Big Rapids 30 miles on US-131 to the Sand Lake exit # 110, (22 Mile Road) west 3 1/2 mile. Corner of Algoma and 22 Mile Road (Kent Co.)

To settle the Estate of the late Sherwood & Muriel Casterline, a Live Public Auction will be held at the time and place listed above.



Note: Sherwood and Muriel were lifelong area residents residing in this home since 1949. Sherwood served in the US Army during WWII and enjoyed collecting the odd and unusual for the next 60 some years. The outbuildings are full of items plus the basement and attic exhibit over 60 years of collecting. Come out for an interesting Auction of items from the past! We will be running 2 Auction rings right from the start. Make plans to be in Northern Kent Co. on Sat. May 18 at 10:00 AM for the start of this most interesting Auction. Plan on surprises as we were not able to see everything and will be discovering items as we prepare for the Auction.

Lunch wagon, wash-up station and port-a-jons will be available for your convenience.

TERMS: Cash or good check day of Auction. Master Card or VISA with 3% service fee. We subscribe to CHECK ALERT INC. (A national check collection company.)

Visit www.artsmithauctions.com for color photos of this Auction.



Art Smith
(616) 696-2598
E-mail: artsmith@triton.net

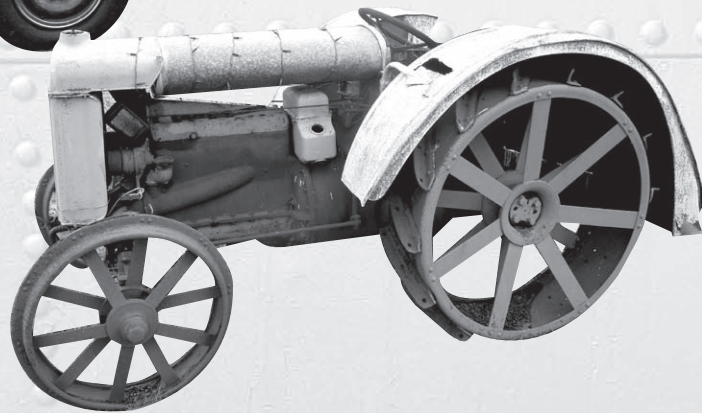
Noah Smith
(616) 633-4254
E-mail: noahsmith@hughes.net

Professionals in the Live Auction Method of Marketing

Guns:

Remington Mod. 141 Game Master .35 pump rifle
 Stevens falling block .32 rim fire rifle
 Ranger Mod. 101 .22 semi-auto, clip feed
 Lefever Arms single shot 12ga. shotgun #17850
 Single shot shotgun
 Russian made bolt action military rifle, dated 1936 #97998
 (NOTE) Sherwood cut off the end of the barrel so he could ship it home during WWII.

Mounted whitetail antlers
 (2) Bayonets
 West Cut hunting knife with sheath
 4-gun wall gun rack

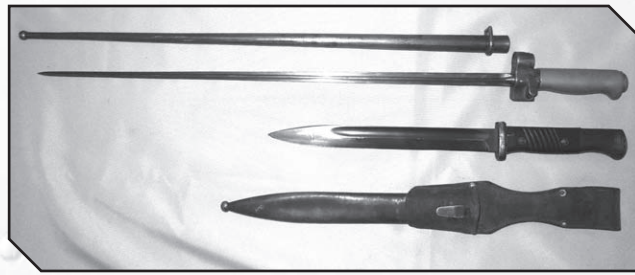


From The Shop:

Fay & Egan metal lathe
 Flat belt wood planer
 Air compressors
 (2) Floor mod. drill presses
 Paint sprayers
 DC welder with V-8 engine
 Acetylene torch set complete on off-road cart
 Bench grinder

Large pneumatic drill
 Chain saws
 Pipe threaders
 Port-a-band saw
 Hyd. jacks
 Bolt cutters
 Hand tools & wrenches
 C-clamps
 Lincoln 225 arc welder
 Welding rod

Elect. shop tools
 B&D valve grinder
 Bench model metal lathe
 Table saw
 (3) Chain falls
 Rakes, hoes, shovels, axes
 etc. etc.



Truck:

1988 Chevy Scottsdale 4X4 pickup truck,
 V-8 automatic, reg. cab, 8' box (1 owner)

Tractor:

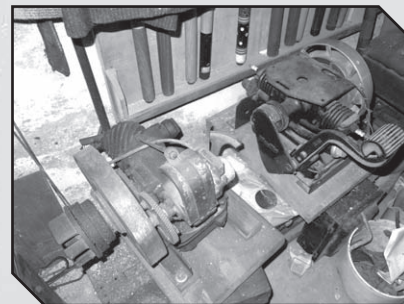
Steel wheeled Fordson tractor (does not run)

WWII Flag:

Nazi Germany Reichsdienstflagge (Reich Service Flag)
 88" x 157" (several pictures on our website) Sherwood brought this flag home from his service in Europe during WWII.

Scrap Iron:

There will be tons of scrap iron including barns full,
 scrap farm equipment and basement full of iron.
All must and will be sold!



Antiques, Collectibles & Farm Primitives:

(SOME MULTIPLES OF EACH!)

Maytag 2-cylinder kick start gas engine
 Associated Mfg. ¾ HP 1 cylinder gas engine #23029
 5' Wood airplane prop, brass edged
 30" wood airplane prop
 Wood peg leg
 Paper photo on canvas, beautiful woman dated 1884
 Grand Rapids Opera play books dated 1940's
 Currier & Ives print book
 China
 Cedar chest
 China cupboard
 Music boxes
 Round OAK pedestal table with chairs
 OAK desk with side bookcases
 Aladdin Mod. 12 kerosene lamp
 ¾ Brass bed
 Iron baby crib
 Fairbanks table scales
 Porcelain top table
 Hand crank table top record player
 Books
 Post cards
 Dresser with mirror
 Soft ball
 Kolster radio
 Wood ice cream maker
 Platform rocker
 Wool blankets
 Wood trunks
 Metal hump back trunk
 Brass oilers
 Lightning rod ball
 Pitcher & thunder pot
 Folding wall mount clothes dryer
 Victrola hand crank record player
 78 RPM records
 Morris chair
 OAK chifforobe
 WWII Army uniforms
 Floor lamps
 Waterfall bedroom outfit with bed, dresser & dressing table

Regulator wall clock
 Rocking chair
 Book shelf
 Primitive trunk
 Youth rocker
 Framed prints
 48-star US flag
 Hand corn planters
 Steel wheels
 Snow sleds
 Flexible flyer sled
 Cant hooks
 Shop carts
 Wood spoke wheels
 (3) Grain cradle scythes
 Small gas engines
 Kerosene heater
 Wood pan windows
 Cross cut saws
 Bean sorter
 Lead heater
 Hay hooks
 Platform scales
 Wood steering wheels
 Fence stretchers
 Tractor fender
 Gas cans
 Auto head lamps
 Hand beam augers
 Milk can strainers
 Milk cans
 Buckboard seat
 Buzz saw blades
 Hub caps
 Wood pulleys
 Tin roof crimpers
 Horse shoes
 Eveners
 Neck yokes
 Wipple trees
 Metal oil tank with hand pump
 Screw jacks
 Cow yokes
 Potato planters
 Farm equipment parts
 Pitcher pumps
 Leg hold traps
 Belt pulleys
 Wood block & tackle
 Walking potato plow
 Walking cultivator
 Engine carburetors

Tire pumps
 Cast iron implement seat
 Steel implement seat
 (2) Hand crank corn shellers
 Hay harpoons
 Steel wheels
 SS milker bucket
 Ammo box
 (2) Anvils
 Cast iron hog kettle
 Cream separator
 Small wood burning stoves
 Wringer washers
 Flat belt grist mill
 (2) Peddle operated stone sharpening wheels
 Wood planes
 Block planes
 Molding planes
 Red Wing 5 gal. crock water cooler
 Corked jugs marked HAVENS
 Other crocks
 Cast iron pots
 Pump jacks
 Gas lanterns
 Kerosene lanterns
 Gas lamps
 Kerosene lamps
 Finger lamps
 Egg crates
 Sad irons
 Gas irons
 Hand operated wood washing machine
 Boxing posters
 Wash boards
 Metal lunch boxes
 Hay knives
 "Oliver" glue pot
 3' Tin snips
 Crock bowls
 RR spike driver
 Cast Iron hog oiler
 Cow bells
 Tobacco cutter
 Spark plugs
 Gravity cream separator
 Radios
 Model trains
 Brass table fans
 Harness spreaders
 Hanging scales

Ice tongs
 Saw vise
 HANDY oil jar
 Sleigh bells
 School Marms hand bell
 8-quart oil jar carrier
 Wood tool chest
 Hanging oil lamp
 Table scales
 Durkopp heavy duty treadle sewing machine
 Wagon springs
 "HOT" food box
 Movie projector
 Mono chain saw
 Equipment wrenches

**Saturday
 May 18th, 2013
 starting @ 10:00AM**

Miscellaneous:

Skiroule snow mobile
 Tractor tires & rims
 MM tractor radiator
 Other radiators
 Cultipacker
 8' pull disc
 Trailer frame
 Tractor tire chains
 Flat drive belt
 Welding rod
 V-8 gas engines
 Car parts
 Furnace fan
 Step ladder
 Folding chairs
 Dinette set with chairs
 Sewing machine in cabinet
 Pots & pans
 Household misc.
 Wheel chair
 Exercise bike
 Walker
 Picnic table

Visit www.artsmithauctions.com for color photos of this Auction.